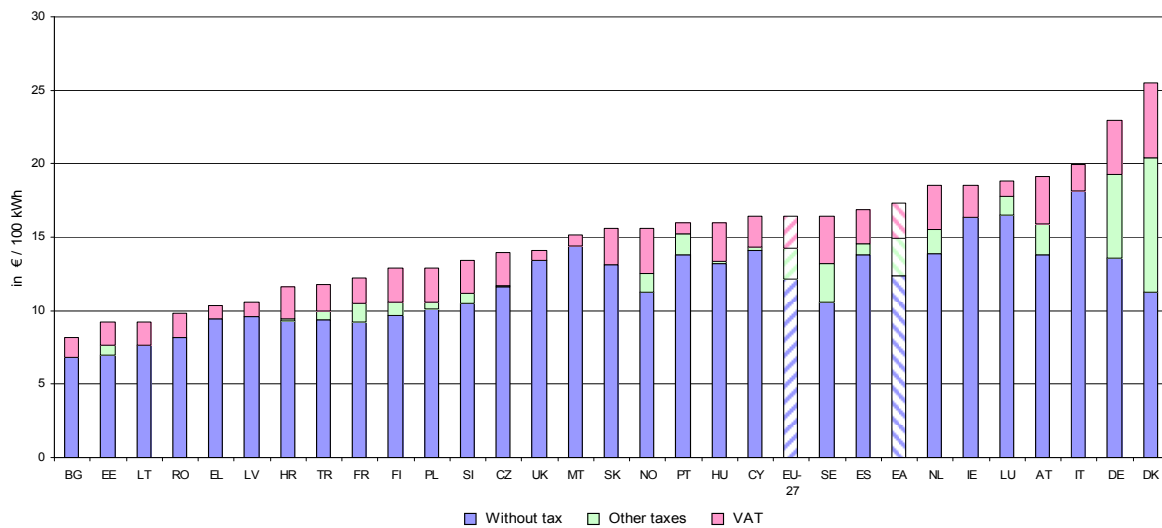


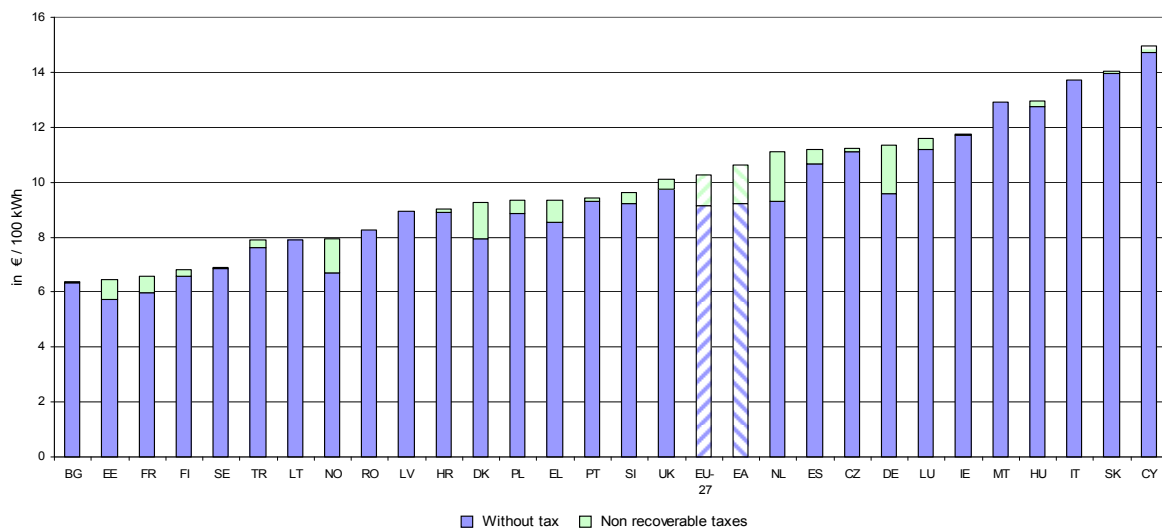
Electricity prices for second semester 2009

Electricity prices for household consumers (in € per 100 kWh)



Source: Eurostat ([nrg_pc_204](#))

Electricity prices for industrial consumers (in € per 100 kWh)



Source: Eurostat ([nrg_pc_205](#))

Electricity prices for household and industrial consumers (in €per 100 kWh)

	EU-27	EA	BE	BG	CZ	DK	DE	EE	IE	EL	ES	FR	IT	CY	LV	LT
Households	16.45	17.35	:	8.18	13.94	25.53	22.94	9.20	18.55	10.32	16.84	12.25	19.97	16.42	10.54	9.26
Industry	10.26	10.63	:	6.39	11.22	9.27	11.34	6.45	11.75	9.36	11.20	6.56	13.70	14.94	8.93	7.90

	LU	HU	MT	NL	AT	PL	PT	RO	SI	SK	FI	SE	UK	HR	TR	NO
Households	18.82	15.96	15.13	18.50	19.09	12.91	15.94	9.79	13.41	15.60	12.89	16.46	14.07	11.64	11.79	15.63
Industry	11.58	12.97	12.91	11.10	:	9.33	9.44	8.28	9.62	14.03	6.83	6.89	10.12	9.04	7.89	7.95

Source: Eurostat ([nrg_pc_204](#), [nrg_pc_205](#))

Electricity prices for household and industrial consumers (in national currency per 100 kWh for non-Euro Area countries)

	BG	CZ	DK	EE	LV	LT	HU	PL	RO	SE	UK	HR	TR	NO
Households	16.00	359.00	190.05	144.00	7.43	31.97	4327.00	54.03	41.60	171.00	12.50	85.00	25.62	133.90
Industry	12.50	289.00	69.00	100.90	6.30	27.28	3516.00	39.07	35.17	71.60	8.99	66.00	17.16	68.11

Source: Eurostat ([nrg_pc_204](#), [nrg_pc_205](#))

Share of taxes paid by end-users

Share of taxes for household consumers:

	Basic price	Other taxes (excl. VAT)	VAT	All Taxes
	in € per 100 kWh			in %
UK	13.40	0.00	0.67	4.8
MT	14.41	0.00	0.72	4.8
EL	9.42	0.05	0.85	8.7
LV	9.59	0.00	0.95	9.0
IE	16.35	0.00	2.20	11.9
LU	16.53	1.22	1.07	12.2
PT	13.83	1.36	0.75	13.2
CY	14.09	0.22	2.11	14.2
SK	13.11	0.00	2.49	16.0
BG	6.85	0.00	1.33	16.3
CZ	11.61	0.11	2.22	16.7
RO	8.15	0.00	1.64	16.8
LT	7.68	0.00	1.58	17.1
HU	13.20	0.12	2.64	17.3
ES	13.81	0.71	2.32	18.0
HR	9.32	0.13	2.19	19.9
TR	9.36	0.63	1.80	20.6
SI	10.50	0.67	2.24	21.7
PL	10.10	0.48	2.33	21.8
EE	6.96	0.71	1.53	24.3
FR	9.23	1.26	1.76	24.7
NL	13.90	1.60	3.00	24.9
FI	9.68	0.88	2.33	24.9
AT	13.80	2.11	3.18	27.7
NO	11.24	1.26	3.13	28.1
SE	10.59	2.60	3.27	35.7
DE	13.59	5.69	3.66	40.8
DK	11.22	9.21	5.10	56.1
BE	:	:	:	:
IT	:	:	:	:

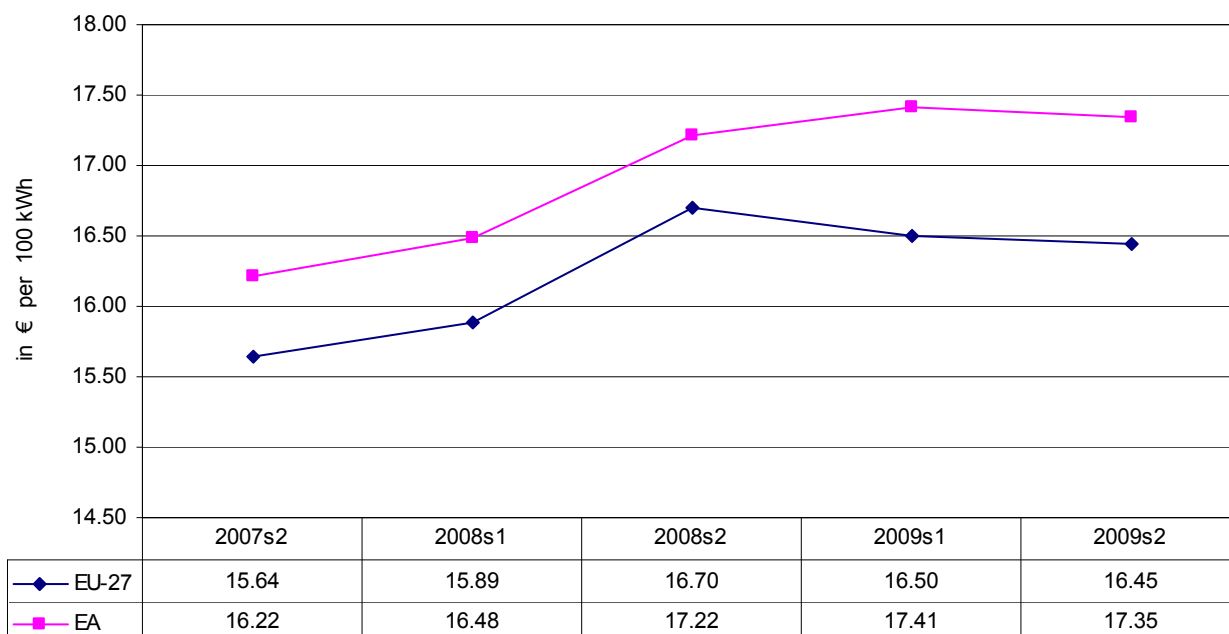
Source: Eurostat ([nrg_pc_204](#))

Share of taxes for industrial consumers:

	Basic price	Non recoverable taxes	Non recoverable taxes
	in € per 100 kWh		in %
LV	8.93	0.00	0.0
LT	7.90	0.00	0.0
RO	8.28	0.00	0.0
MT	12.91	0.00	0.0
IE	11.70	0.05	0.4
SK	13.96	0.07	0.5
SE	6.84	0.05	0.7
BG	6.34	0.05	0.8
CZ	11.10	0.12	1.1
PT	9.32	0.12	1.3
CY	14.72	0.22	1.5
HR	8.90	0.14	1.5
HU	12.76	0.21	1.6
TR	7.63	0.26	3.3
LU	11.18	0.40	3.5
UK	9.73	0.39	3.9
FI	6.56	0.27	4.0
SI	9.21	0.41	4.3
ES	10.66	0.54	4.8
PL	8.86	0.47	5.0
FR	5.99	0.57	8.7
EL	8.53	0.83	8.9
EE	5.75	0.70	10.9
DK	7.93	1.34	14.5
DE	9.58	1.76	15.5
NO	6.69	1.26	15.8
NL	9.30	1.80	16.2
AT	:	:	:
BE	:	:	:
IT	:	:	:

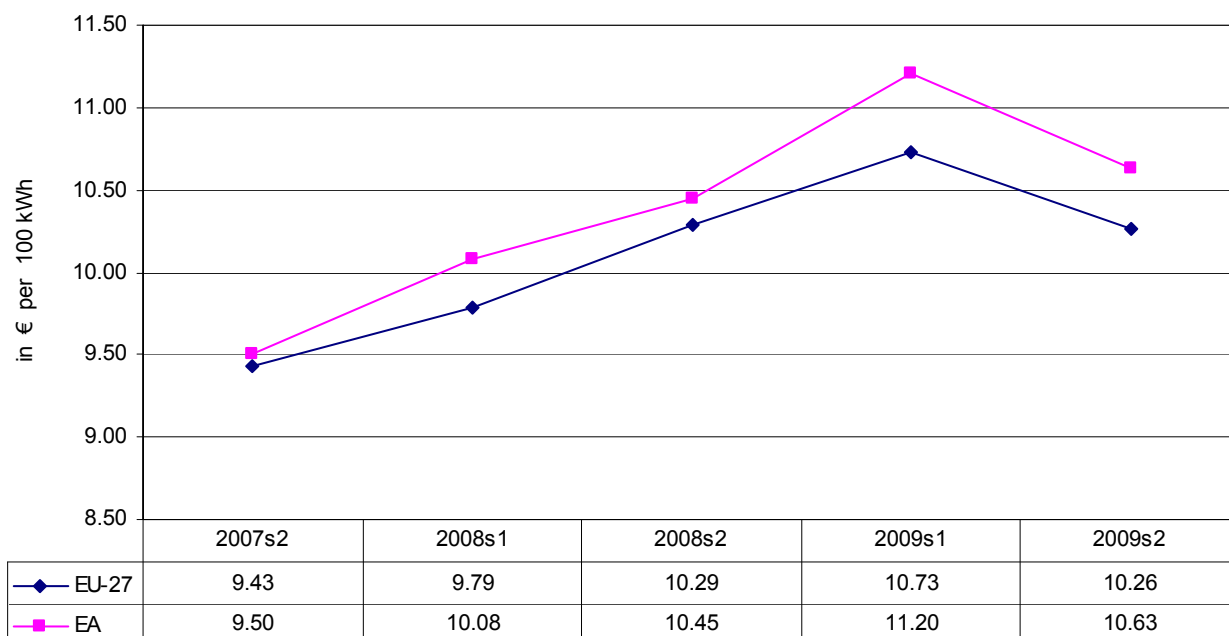
Source: Eurostat ([nrg_pc_205](#))

Evolution of EU-27 and EA electricity prices for household consumers in € per 100kWh (all taxes included)



Source: Eurostat ([nrg_pc_204](#))

Evolution of EU-27 and EA electricity prices for industrial consumers in € per 100kWh (VAT and all other recoverable taxes and levies excluded)

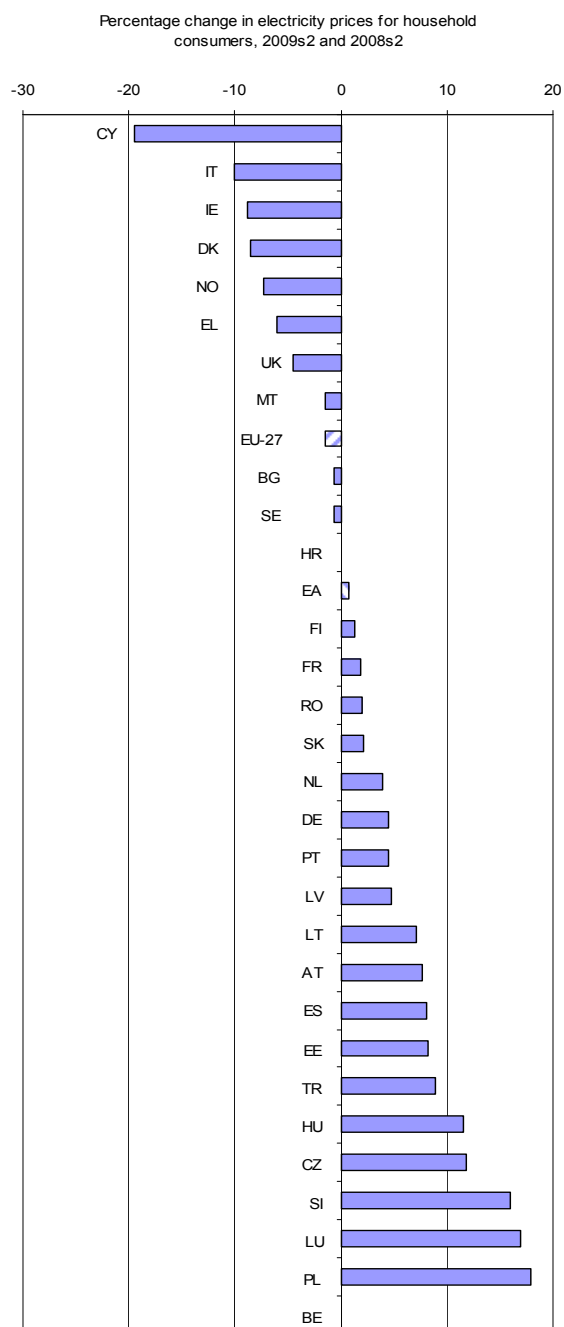


Source: Eurostat ([nrg_pc_205](#))

Electricity prices for household consumers, in national currency per 100 kWh (all taxes included) – comparison between second semester 2009 and second semester 2008 (in %)

	2007s2	2008s1	2008s2	2009s1	2009s2	2009s2 2008s2
	<i>in NAC per 100 kWh</i>					<i>in %</i>
CY	15.73	17.80	20.40	15.58	16.42	-19.51
IT	:	20.27	22.21	20.98	19.97	-10.09
IE	19.18	17.69	20.33	20.30	18.55	-8.76
DK	178.91	196.47	207.63	200.95	190.05	-8.47
NO	118.30	130.30	144.46	139.20	133.90	-7.31
EL	9.84	10.47	10.99	11.54	10.32	-6.10
UK	10.28	11.30	13.10	13.10	12.50	-4.58
MT	9.18	9.93	15.36	17.08	15.13	-1.50
EU-27	15.64	15.89	16.70	16.50	16.45	-1.50
BG	14.10	13.90	16.10	16.10	16.00	-0.62
SE	149.60	159.20	172.00	174.00	171.00	-0.58
HR	72.00	72.00	85.00	85.00	85.00	0.00
EA	16.22	16.48	17.22	17.41	17.35	0.75
FI	11.49	12.23	12.73	12.96	12.89	1.26
FR	12.22	12.13	12.03	12.28	12.25	1.83
RO	38.12	38.95	40.76	41.32	41.60	2.06
SK	15.14	15.11	15.27	15.40	15.60	2.16
NL	17.20	17.30	17.80	19.00	18.50	3.93
DE	21.05	21.48	21.95	22.82	22.94	4.51
PT	15.62	14.82	15.25	15.08	15.94	4.52
LV	5.10	5.88	7.09	7.43	7.43	4.80
LT	30.03	29.70	29.85	32.85	31.97	7.10
AT	17.40	17.79	17.72	19.09	19.09	7.73
ES	14.00	13.66	15.57	15.77	16.84	8.16
EE	123.00	127.40	133.00	144.30	144.00	8.27
TR	15.75	18.84	23.53	24.63	25.62	8.88
HU	3271.00	3928.00	3878.00	4300.00	4327.00	11.58
CZ	291.00	321.00	321.00	359.00	359.00	11.84
SI	11.16	11.47	11.56	13.65	13.41	16.00
LU	16.45	16.45	16.09	18.82	18.82	16.97
PL	51.39	43.94	45.81	50.63	54.03	17.94
BE	16.83	19.72	20.81	19.16	:	:

Source: Eurostat ([nrg_pc 204](#))

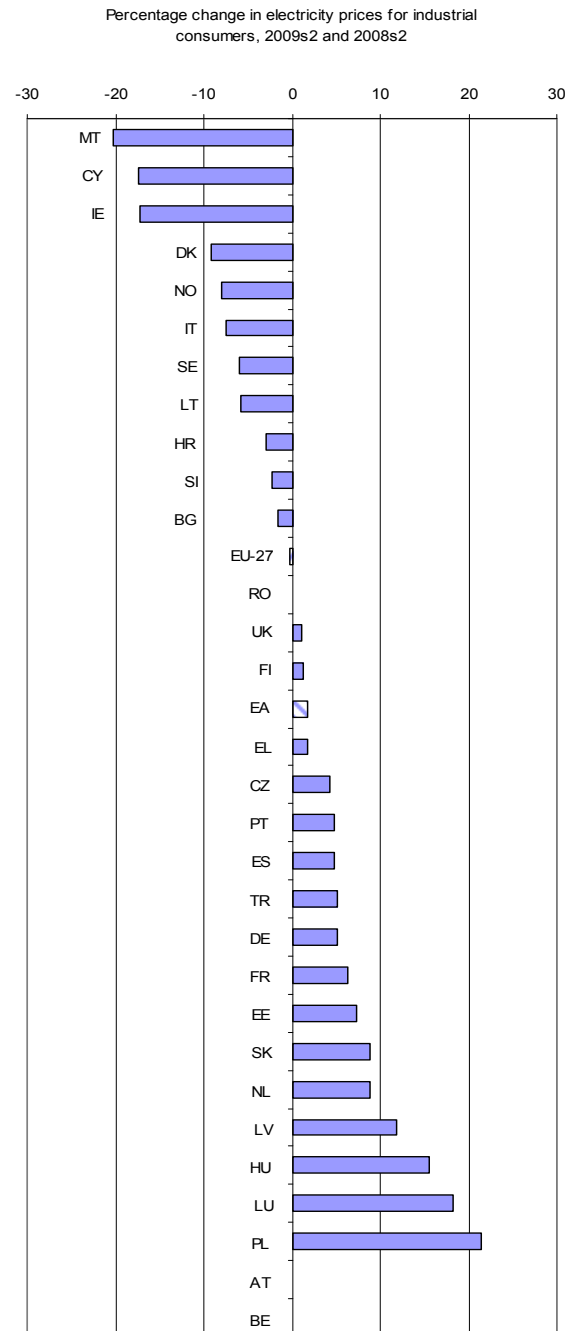


Source: Eurostat ([nrg_pc 204](#))

Electricity prices for industrial consumers, in national currency per 100 kWh (VAT and all other recoverable taxes and levies excluded) – comparison between second semester 2009 and second semester 2008 (in %)

	2007s2	2008s1	2008s2	2009s1	2009s2	2009s2 2008s2
	<i>in NAC per 100 kWh</i>					<i>in %</i>
MT	12.21	12.21	16.19	15.06	12.91	-20.26
CY	13.91	14.27	18.07	11.86	14.94	-17.32
IE	12.35	13.02	14.19	12.06	11.75	-17.20
DK	66.70	68.08	76.00	64.00	69.00	-9.21
NO	59.70	62.30	74.04	70.30	68.11	-8.01
IT	:	13.99	14.81	15.82	13.70	-7.49
SE	60.90	65.00	76.20	72.40	71.60	-6.04
LT	25.70	28.62	28.95	31.89	27.28	-5.77
HR	54.00	55.00	68.00	64.00	66.00	-2.94
SI	9.10	9.32	9.85	11.18	9.62	-2.34
BG	11.10	11.00	12.70	12.70	12.50	-1.57
EU-27	9.43	9.79	10.29	10.73	10.26	-0.29
RO	30.34	32.53	35.12	34.34	35.17	0.14
UK	7.48	7.57	8.89	9.98	8.99	1.12
FI	5.86	6.40	6.74	6.89	6.83	1.34
EA	9.50	10.08	10.45	11.20	10.63	1.72
EL	7.89	8.61	9.20	9.48	9.36	1.74
CZ	259.00	279.00	277.00	290.00	289.00	4.33
PT	7.93	8.95	9.01	9.43	9.44	4.77
ES	9.58	9.61	10.68	11.54	11.20	4.87
TR	11.53	12.98	16.33	16.78	17.16	5.08
DE	10.13	10.53	10.78	11.32	11.34	5.19
FR	5.74	6.51	6.17	7.25	6.56	6.32
EE	83.00	88.70	94.00	100.60	100.90	7.34
SK	11.58	12.73	12.90	14.23	14.03	8.76
NL	9.70	9.90	10.20	11.30	11.10	8.82
LV	4.16	4.61	5.63	6.33	6.30	11.90
HU	2847.00	2897.00	3041.00	3598.43	3516.00	15.62
LU	9.76	9.76	9.79	11.57	11.58	18.28
PL	33.70	30.76	32.18	40.36	39.07	21.41
AT	9.40	10.64	10.72	:	:	:
BE	9.49	10.69	10.96	11.11	:	:

Source: Eurostat ([nrg_pc_205](#))



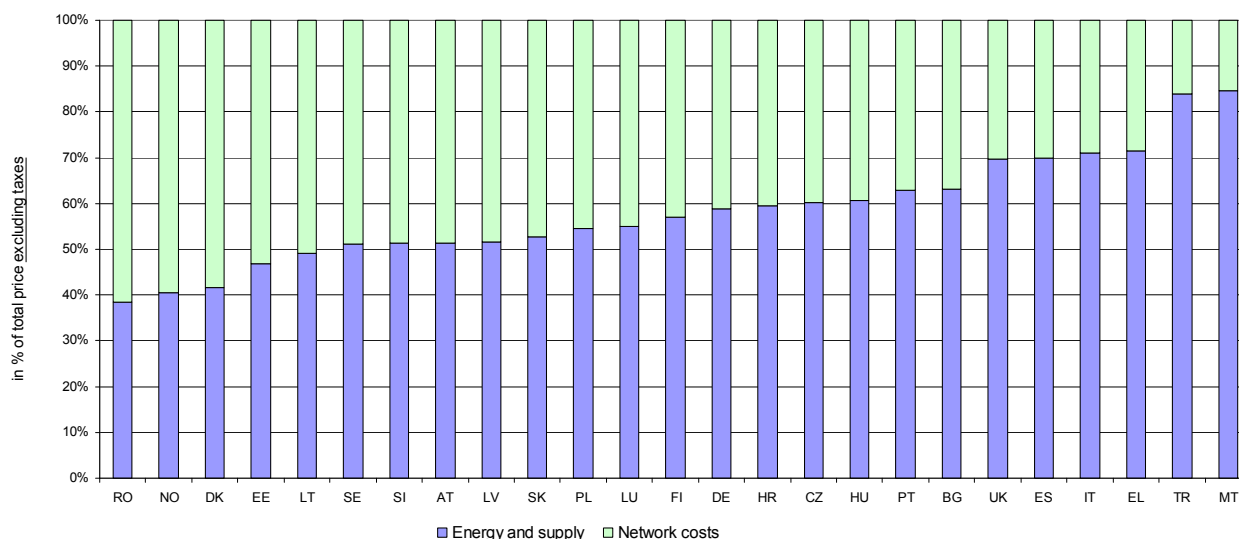
Source: Eurostat ([nrg_pc_205](#))

Disaggregated prices for household consumers

	Composition of the household prices in € per 100 kWh				Share in price without tax (%)	
	TOTAL PRICE	Energy and supply	Network costs	Taxes and levies	Energy and supply	Network costs
DE	22.94	7.98	5.61	9.34	58.7	41.3
UK	14.07	9.34	4.05	0.68	69.7	30.3
FR	12.25	:	:	:	:	:
IT	19.97	10.84e	4.42e	5.24e	71.0e	29.0e
NL	18.50	:	:	:	:	:
BE	:	:	:	:	:	:
DK	25.53	4.70	6.58	14.38	41.7	58.3
EL	10.32	6.73	2.69	1.90	71.4	28.6
IE	18.55	:	:	:	:	:
LU	18.82	9.09	7.45	2.29	55.0	45.0
PT	15.94	8.70	5.14	2.11	62.9	37.1
ES	16.84	9.67	4.14	3.03	70.0	30.0
AT	19.09	7.10	6.71	5.29	51.4	48.6
SE	16.46	5.42	5.19	5.88	51.1	48.9
FI	12.89	5.51	4.17	3.21	56.9	43.1
CY	16.42	:	:	:	:	:
CZ	13.94	6.99	4.62	2.33	60.2	39.8
HU	15.96	8.01	5.19	2.76	60.7	39.3
LV	10.54	4.93	4.64	0.96	51.6	48.4
LT	9.26	3.77	3.91	1.58	49.1	50.9
SK	15.60	6.91	6.20	2.49	52.7	47.3
MT	15.13	12.18e	2.20e	0.76	84.7e	15.3e
BG	8.18	4.29	2.51	1.38	63.2	36.8
RO	9.79	3.14	5.02	1.64	38.5	61.5
EE	9.20	3.25	3.71	2.24	46.7	53.3
SI	13.41	5.40	5.11	2.91	51.4	48.6
PL	12.91	5.51	4.59	2.80	54.5	45.5
HR	11.64	5.62	3.84	2.33	59.4	40.6
TR	11.79	7.85	1.51	2.42	83.9	16.1
NO	15.63	4.54	6.69	4.40	40.4	59.6

Source: Eurostat

Share in price (in %)



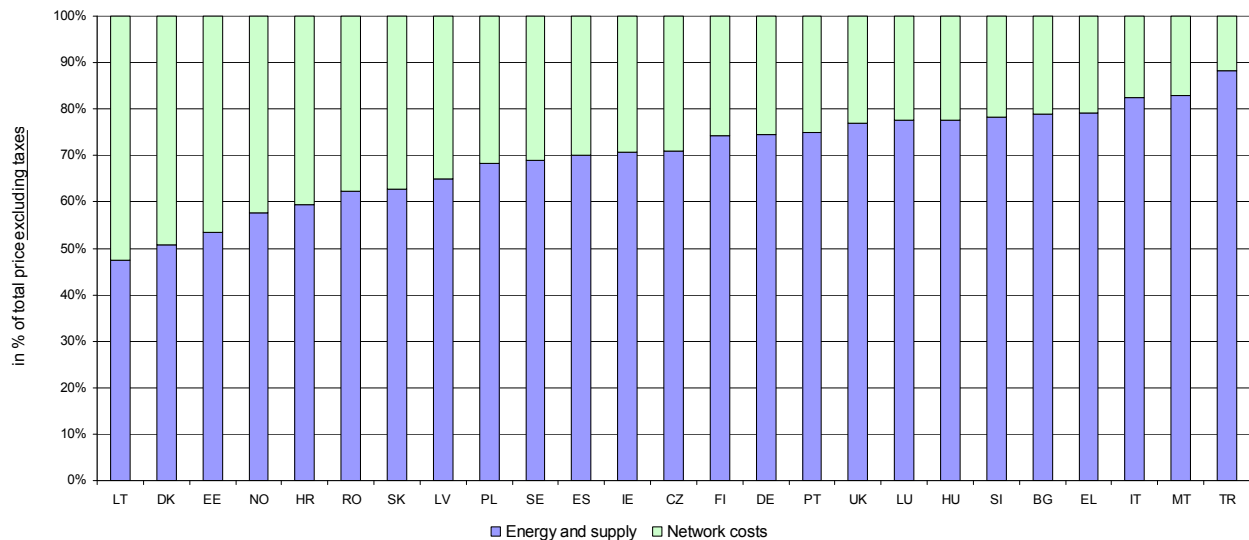
Source: Eurostat

Disaggregated prices for industrial consumers

	Composition of the industrial prices in €per 100 kWh				Share in price without tax (%)	
	TOTAL PRICE	Energy and supply	Network costs	Non-recoverable taxes and levies	Energy and supply	Network costs
DE	11.34	7.13	2.45	1.76	74.4	25.6
UK	10.12	7.49	2.24	0.39	77.0	23.0
FR	6.56	:	:	:	:	:
IT	13.70	10.10e	2.15e	2.24e	82.4e	17.6e
NL	11.10	:	:	:	:	:
BE	:	:	:	:	:	:
DK	9.27	4.03	3.90	1.34	50.8	49.2
EL	9.36	6.76	1.77	0.83	79.2	20.8
IE	11.75	8.43e	3.47e	0.00	70.8e	29.2e
LU	11.58	8.66	2.51	0.41	77.5	22.5
PT	9.44	6.98	2.34	0.13	74.9	25.1
ES	11.20	7.46	3.20	0.54	70.0	30.0
AT	:	:	:	:	:	:
SE	6.89	4.73	2.12	0.05	69.1	30.9
FI	6.83	4.88	1.68	0.26	74.4	25.6
CY	14.94	:	:	:	:	:
CZ	11.22	7.88e	3.22e	0.12	71.0e	29.0e
HU	12.97	9.91	2.85	0.21	77.7	22.3
LV	8.93	5.81	3.13	0.00	65.0	35.0
LT	7.90	3.74	4.15	0.00	47.4	52.6
SK	14.03	8.76	5.20	0.07	62.8	37.2
MT	12.91	10.71e	2.20e	0.00	83.0e	17.0e
BG	6.39	5.01	1.33	0.05	79.0	21.0
RO	8.28	5.16	3.12	0.00	62.3	37.7
EE	6.45	3.07	2.68	0.71	53.3	46.7
SI	9.62	7.22	2.00	0.41	78.3	21.7
PL	9.33	6.06	2.80	0.48	68.4	31.6
HR	9.04	5.21	3.56	0.14	59.4	40.6
TR	7.89	6.73	0.90	0.27	88.2	11.8
NO	7.95	3.86	2.82	1.26	57.8	42.2

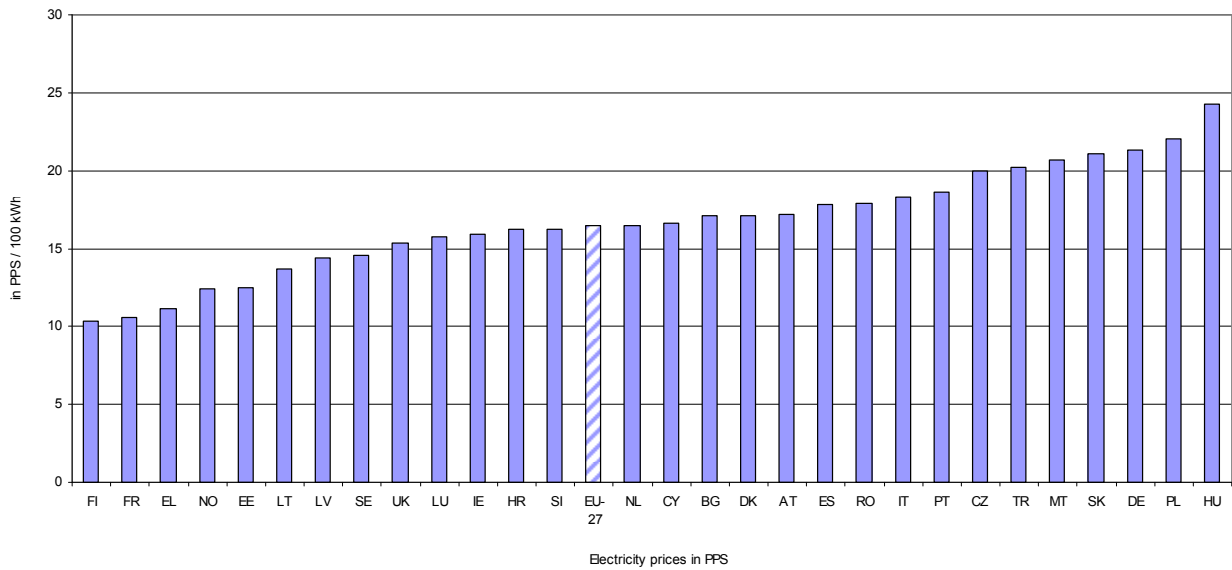
Source: Eurostat

Share in price (in %)



Source: Eurostat

Electricity prices in purchasing power standards (PPS) per 100kWh for household consumers (all taxes included)



Source: Eurostat ([nrg_pc_204](#))

Electricity prices in purchasing power standards (PPS) per 100kWh for household consumers (all taxes included)

	EU-27	BE	BG	CZ	DK	DE	EE	IE	EL	ES	FR	IT	CY	LV	LT	LU
Households	16.45	:	17.07	20.01	17.12	21.36	12.52	15.88	11.16	17.86	10.61	18.32	16.67	14.44	13.71	15.72

	HU	MT	NL	AT	PL	PT	RO	SI	SK	FI	SE	UK	HR	TR	NO
Households	24.26	20.68	16.46	17.17	22.03	18.61	17.94	16.24	21.12	10.33	14.60	15.37	16.22	20.20	12.39

Source: Eurostat ([nrg_pc_204](#))

Comments

Definitions:

'Household consumers' refer to consumer band Dc (annual consumption between 2500 and 5000 kWh).

'Industrial consumers' refer to consumer band Ic (annual consumption between 500 and 2000 MWh).

No price data for Austria (for industrial consumers) and Belgium.

Price data for Italy and the Netherlands are provisional.

Level 1 price (all taxes excluded) for household and industrial consumers are missing for Italy.

"e" = estimated value

":" = not available

kWh = kilowatt-hour

MWh = megawatt-hour

EU aggregates:

EU-27 = aggregated prices weighted by consumption for the following EU countries: Belgium (BE), Bulgaria (BG), Czech Republic (CZ), Denmark (DK), Germany (DE), Estonia (EE), Ireland (IE), Greece (EL), Spain (ES), France (FR), Italy (IT), Cyprus (CY), Latvia (LV), Lithuania (LT), Luxembourg (LU), Hungary (HU), Malta (MT), the Netherlands (NL), Austria (AT), Poland (PL), Portugal (PT), Romania (RO), Slovenia (SI), Slovakia (SK), Finland (FI), Sweden (SE) and the United Kingdom (UK).

EA = aggregated prices weighted by consumption for the following Euro Area countries: EA-13 from 01.01.2007 (Belgium, Germany, Greece, Spain, France, Ireland, Italy, Luxembourg, the Netherlands, Austria, Portugal, Slovenia and Finland); EA-15 from 01.01.2008 (EA-13 + Cyprus and Malta); EA-16 from 01.01.2009 (EA-15 + Slovakia).

HICP indicator (Harmonized Indices of Consumer Prices) was used for EU and EA aggregates where price data was missing.

Exchange rates:

Prices for the standard consumers are given in national currencies, PPS (Purchasing Power Standard, annual estimated value) and in euro (average exchange rate second semester 2009).

Conversion table in euro for non-Euro Area countries

			1 EUR =				1 EUR =
Bulgaria	BG	(BGN)	1.96	Poland	PL	(PLN)	4.19
Czech Republic	CZ	(CZK)	25.76	Romania	RO	(RON)	4.25
Denmark	DK	(DKK)	7.44	Sweden	SE	(SEK)	10.39
Estonia	EE	(EKK)	15.65	United Kingdom	UK	(GBP)	0.89
Latvia	LV	(LVL)	0.71	Croatia	HR	(HRK)	7.30
Lithuania	LT	(LTL)	3.45	Turkey	TR	(TRY)	2.17
Hungary	HU	(HUF)	271.12	Norway	NO	(NOK)	8.57

Source: Eurostat ([ert_bil_eur_q](#))

Methodology

Methodology for the collection of electricity prices

The legal basis for the collection of industrial gas and electricity prices is defined by the Directive 2008/92/EC of the European Parliament and of the Council of the European Union. Prices for households are reported on a voluntary basis.

The price information includes:

- National average prices;
- Average for the last 6 months;
- Prices are reported for different consumption bands.

Annual consumption (MWh)		
Industrial end-users	Lowest	Highest
Band Ia		< 20
Band Ib	20	< 500
Band Ic	500	< 2 000
Band Id	2 000	< 20 000
Band Ie	20 000	< 70 000
Band If	70 000	≤ 150 000

Annual consumption (kWh)		
Household end-users	Lowest	Highest
Band Da		< 1 000
Band Db	1 000	< 2 500
Band Dc	2 500	< 5 000
Band Dd	5 000	< 15 000
Band De	≥ 15 000	

Further information

Eurostat Website: <http://ec.europa.eu/eurostat>

Data on "Energy Statistics - Prices"

<http://epp.eurostat.ec.europa.eu/portal/page/portal/energy/data/database>

More information about "Energy Statistics"

<http://epp.eurostat.ec.europa.eu/portal/page/portal/energy/introduction>

European Statistical Data Support:

Contact details for this support network can be found on our Internet site:

<http://ec.europa.eu/eurostat/>

Manuscript completed on: 18.05.2010

Data extracted on: 23.04.2010

ISSN 1977-0340

Catalogue number: KS-QA-10-022-EN-N

© European Union, 2010